

connecting greenport to hudson



COLUMBIA
LAND CONSERVANCY



Opening the door to nature for our communities

For many residents of Hudson and Greenport, access to nature is closer than it seems — yet still just out of reach. Hundreds of acres of conserved lands, regional trails, and scenic open spaces abound. But today, these places are disconnected from one another and from the people who would most benefit from them.

This project will change that.

With philanthropic support, the Columbia Land Conservancy will help transform Charles Williams Park into a welcoming community hub. We will create a safe, accessible trail connection linking the park to nearly 1,000 acres of conservation land and regional trail networks. The result will be more than improved infrastructure - it will be a meaningful expansion of opportunity for recreation, health, connection, and stewardship.

Why This Matters

Access to nature should not depend on where you live or whether you own a car. In Hudson and surrounding neighborhoods, families live within sight of extraordinary landscapes yet lack easy ways to experience them. By revitalizing Charles Williams Park and building a connector trail, this project will create a gateway to outdoor spaces that support physical wellbeing, environmental learning, and community connection.

This investment will:

- ***Transform an underutilized park*** into a vibrant gathering place for families and neighbors
- ***Create a safe, walkable connection*** to regional trails and conserved lands
- ***Improve accessibility*** so people of all abilities can experience nature
- ***Strengthen habitat*** through native plantings and ecological restoration
- ***Foster long-term stewardship*** through youth engagement initiatives

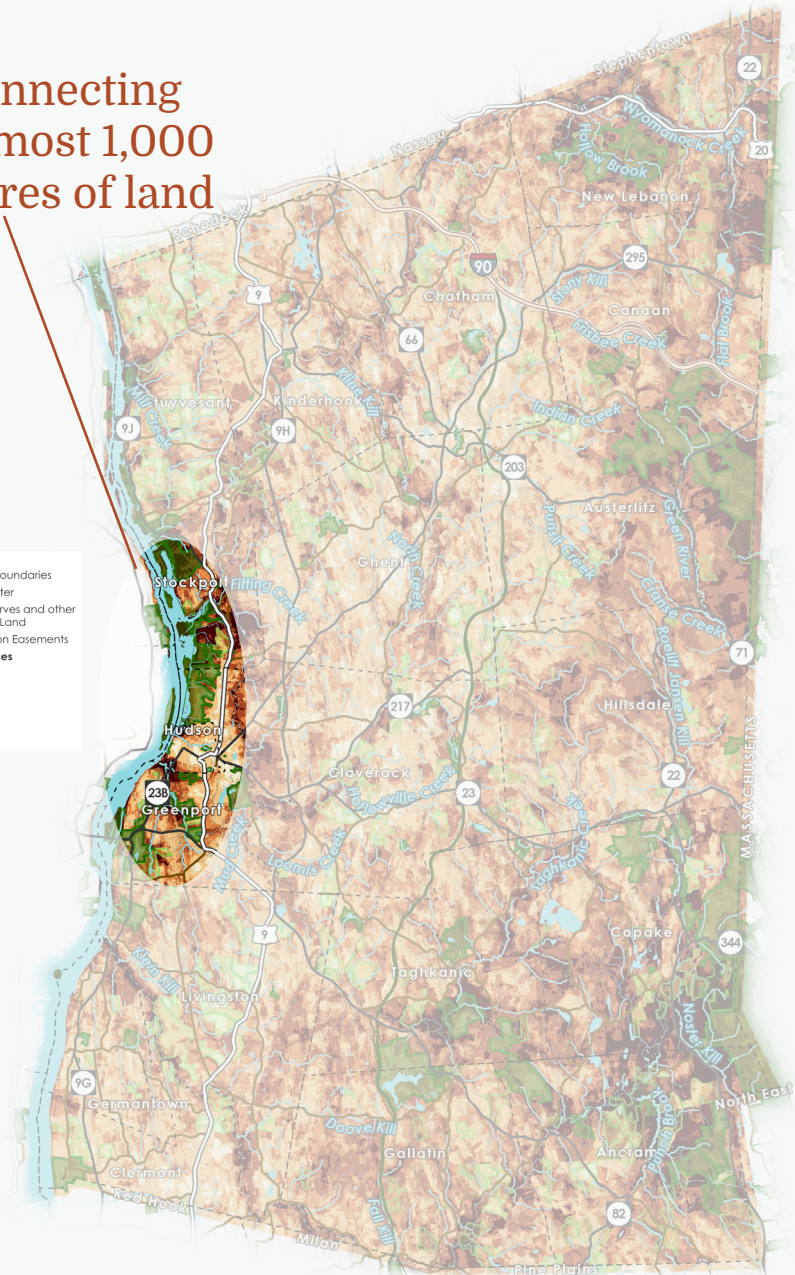
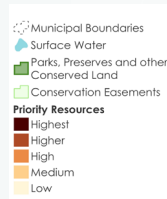
Together, these improvements will help ensure that conserved lands are not only protected — but truly shared.

“The completed park and connector trail will not only provide a variety of much-needed facilities for outdoor play and leisure, but will eventually serve as an incredible gateway to the treasures of the entire region.”

- Rose Harvey,
founder and
Executive Director of
New City Parks



connecting
almost 1,000
acres of land



A regional impact

This initiative represents a powerful example of partnership and vision. By connecting a mosaic of existing open spaces, the Columbia Land Conservancy and partners are supporting ecological health, increasing community vitality, and providing the first opportunity for many residents to access these resources nature without a car.

The new trail connection will connect:

- CLC’s Greenport property
- The Empire State Trail
- Stockport Wildlife Management Area
- Additional regional open space destinations

Strategies:

- Support conservation partners in the City of Hudson including city government and nonprofit organizations.
- Encourage 2,500 acts of care per year among youth land stewards



This project will not only improve Hudson's Charles Williams Park, but it will also create a trail connection from the City to CLC's Greenport property.

Part of this trail connection work will include making improvements to existing trails at Greenport to enhance their accessibility and provide a better experience for Access for All Trail users.



The improvements to Charles Williams Park include installing native tree and shrub plantings to enhance habitat for pollinators.

At Greenport, CLC will continue existing efforts to increase pollinator habitat and work with volunteers to remove invasive species.

Project funding goal: \$2.75M

Charles Williams Park Improvements Phase I (secured)	\$1.675M
Charles Williams Park Improvements Phase II	\$250,000
Funds to create a connector trail and improve the trail system at Greenport	\$500,000
Funds to support a youth engagement initiative to provide long term care for the property	\$75,000

With \$1.675 million in public funding and early private support already secured for initial park upgrades, your philanthropic investment will help bring the full vision to life.



COLUMBIA
LAND CONSERVANCY